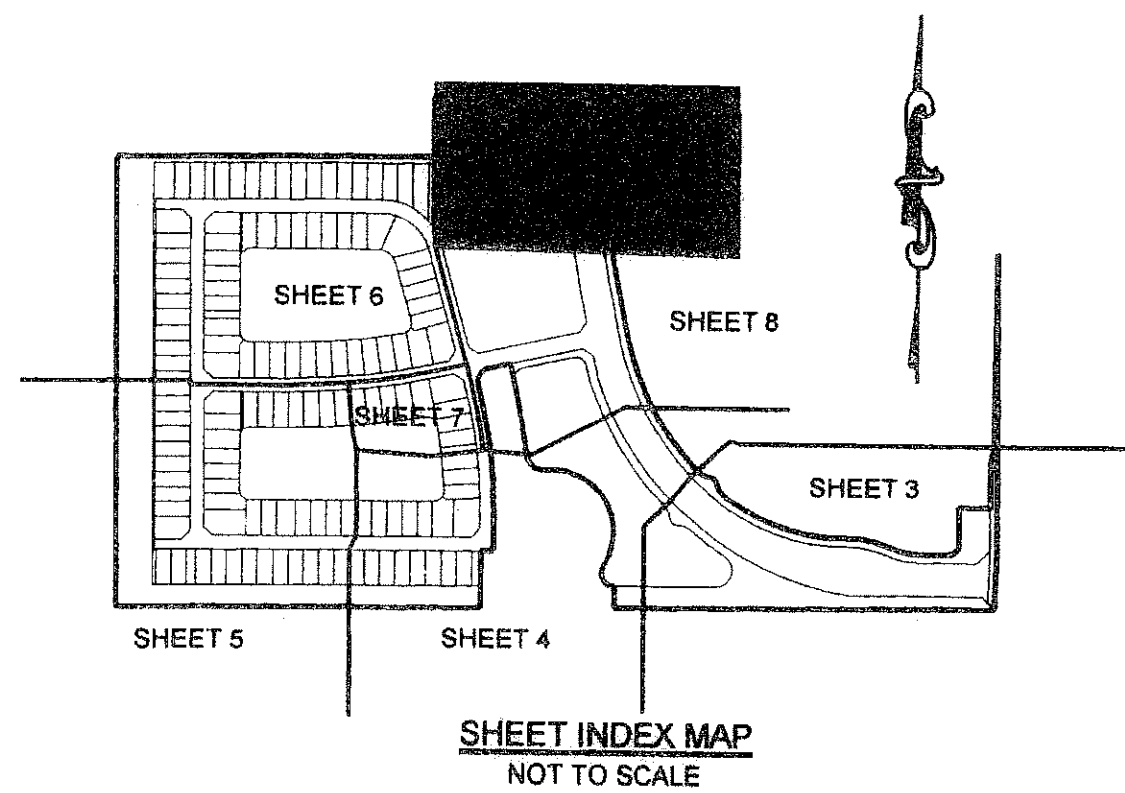


# MINI ASSEMBLAGE P.U.D. PLAT ONE

ALSO KNOWN AS GREYSTONE P.U.D.

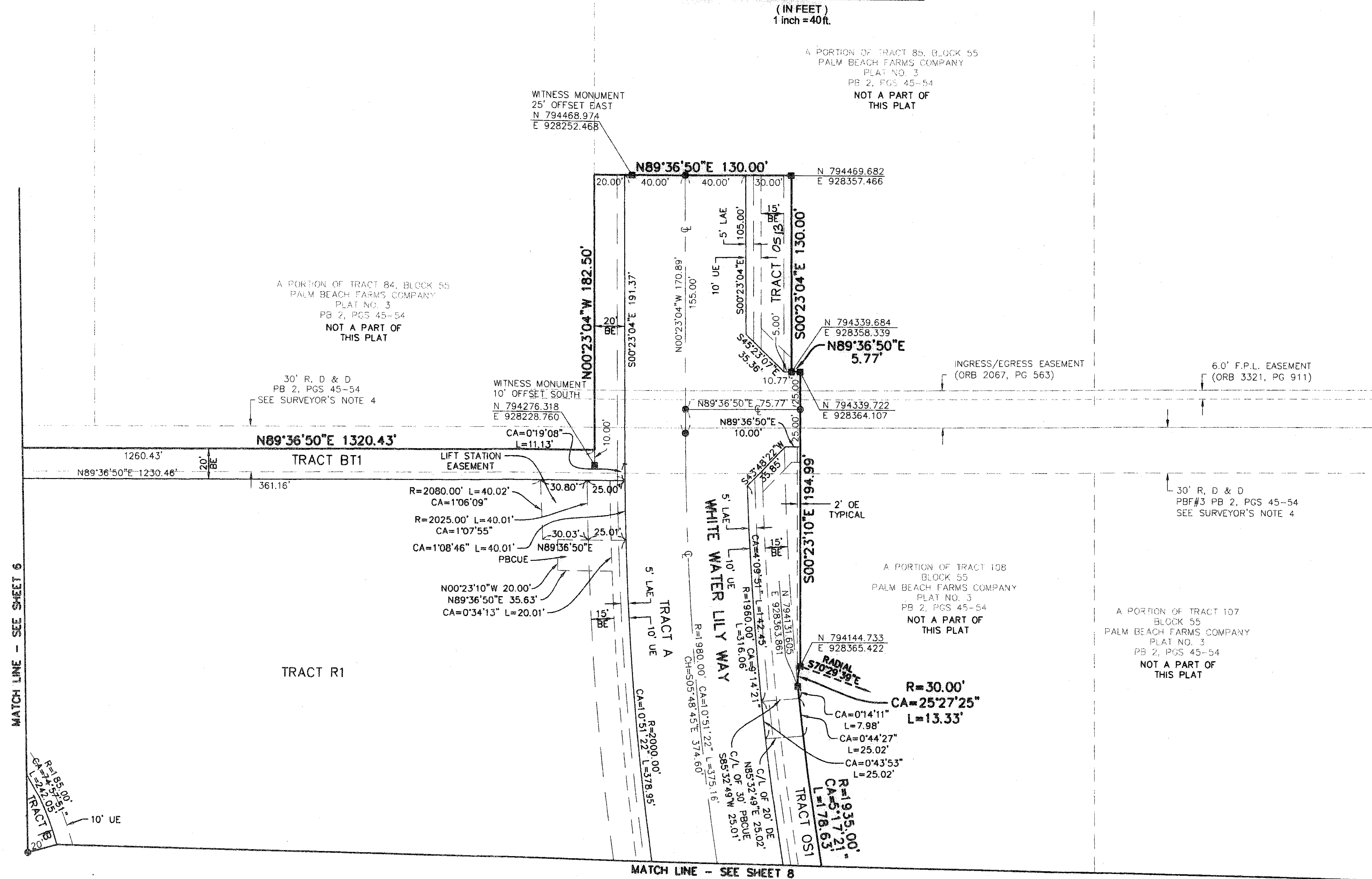
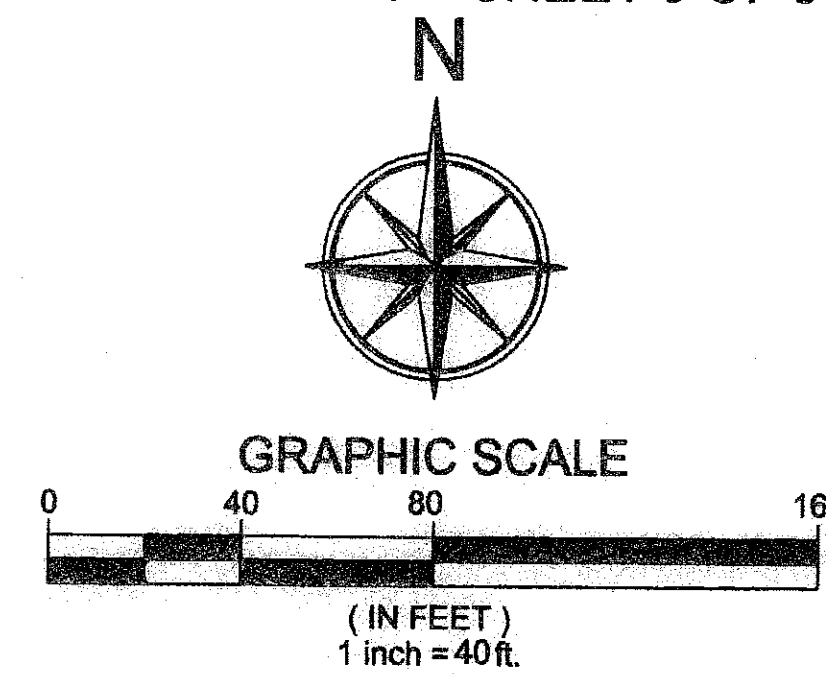
BEING A REPLAT OF TRACTS 110 THROUGH 115 AND A PORTION OF TRACTS 85, 105, 108, 109, 116, 117, 118, 119, AND 120, BLOCK 55, PALM BEACH FARMS CO., PLAT NO. 3, PLAT BOOK 2, PAGES 45 THROUGH 54, PUBLIC RECORDS OF PALM BEACH COUNTY FLORIDA, BEING IN SECTION 28, TOWNSHIP 45 SOUTH, RANGE 42 EAST PALM BEACH COUNTY, STATE OF FLORIDA  
AUGUST 2006 SHEET 9 OF 9

152



This Instrument Prepared By:  
Kevin M. Beck, P.S.M.  
Certificate of Authorization No. LB 6791  
AUGUST 2006

**Calvin, Giordano & Associates, Inc.**  
Engineers Surveyors Planners  
560 Village Boulevard, Suite 340  
West Palm Beach, Florida 33409  
Phone: 561.684.8181 Fax 561.684.8360



**LEGEND:**

- BE = BUFFER EASEMENT
- CA = CENTRAL (DELTA) ANGLE
- CH = CHORD
- DB = DEED BOOK
- DE = DRAINAGE EASEMENT
- ESMT = EASEMENT
- L = ARC LENGTH
- LAE = LIMITED ACCESS EASEMENT
- LMAE = LAKE MAINTENANCE ACCESS EASEMENT
- LME = LAKE MAINTENANCE EASEMENT
- LWDD = LAKE WORTH DRAINAGE DISTRICT
- OE = OVERHANG EASEMENT
- ORB = OFFICIAL RECORDS BOOK
- PB = PLAT BOOK
- PBCUE = PALM BEACH COUNTY UTILITY EASEMENT
- POB = POINT OF BEGINNING
- POC = POINT OF COMMENCEMENT
- P.U.D. = PLANNED UNIT DEVELOPMENT
- PG(S) = PAGE(S)
- (R) = RADIAL
- R,D&D = ROAD, DIKE AND DITCH RESERVATION
- R/W = RIGHT-OF-WAY
- UE = UTILITY EASEMENT
- USC&G = UNITED STATES COASTAL AND GEODETIC
- C/L = CENTERLINE
- Q = CENTERLINE
- = PERMANENT REFERENCE MONUMENT (4" X 4" CONCRETE MONUMENT WITH A 2" ALUMINUM PLATE STAMPED "LB 6791", UNLESS OTHERWISE NOTED)
- ▼ = ZERO LOT LINE SYMBOL
- = PERMANENT CONTROL POINT (SET "PK" NAIL AND DISK LABELED "LB 6791")

SUBDIVISION Mini Assemblage Pl 1  
 BLOCK 55  
 PLAT NO. 3  
 PLAT BOOK 2  
 PAGES 45-54  
 ZONING PUD  
 ZIP CODE 33411  
 DATE 8/2/06  
 BY KMB  
 CHECKED BY KMB

2-1206-06-044 Mini Assemblage, Boundary and Plat Survey, PLAT 1, 06-30-04-55, PLAT, 10-44-41, AM, EST.